

EnGenius Mesh AP Reset Tool

Quick Guide

Revision : 1.1

Table of Contents.....	2
1. Overview.....	3
2. Installation Procedure.....	3
3. Uninstallation Procedure.....	3
4. Tool Layout.....	4
5. How to scan the Mesh APs.....	4
6. How to reset the Mesh APs.....	4
7. Status.....	5
8. Change Broadcast IP Address.....	5

1. Overview

This document is intended to provide the user of the *EnGenius Mesh AP Reset Tools* a brief idea regarding the application software, as well as the functions and features of it.

2. Installation Procedure

The installation steps are simplified to six simple steps, as following:

1. Run the installer file. When the installation starts up, a brief introduction regarding the installer will be displayed, hit **Next** to proceed.
2. Select the desired directory to store the program. By default the program will be located at the *Program Files* (For Windows user).
3. Choose the directory to create a shortcut file for the program. (ie. Desktop, new program group..).
4. Check the installation settings through the pre-install summary. Hit the **Install** button if everything is okay.
5. The installation in progress. The status is shown by the progress bar at the bottom of the window.
6. Installation completed. Press the **Done** button to exit the wizard. Now user can run the application program via the shortcut created previously.

3. Uninstallation Procedure

In order to remove the program from the computer, user may use the uninstallation wizard created during the installation of the *Mesh AP Reset Tool*. The wizard is located at the *Uninstall_Mesh AP Reset Tool* folder in the program directory. Run the uninstaller and follow the three simple steps:

1. A brief introduction regarding the uninstallation wizard of the *EnGenius Mesh AP Reset Tool*. Click on the **Uninstall** button to start the uninstallation.
2. Uninstallation in progress. The status is shown by the progress bar at the bottom of the window.
3. Uninstallation completed. Press the **Done** button to exit the wizard.

4. Tool Layout

Basically, the layout of the *Mesh AP Reset Tool* can be illustrated via the image below:



The table at the middle of the application software is to display every Mesh AP unit discovered during the scanning process. The buttons located next to the table are used to perform the two basic operations of the *AP Reset Tool*, whereas the bar at the bottom of the window would display the status of operations.

5. How to scan the Mesh APs

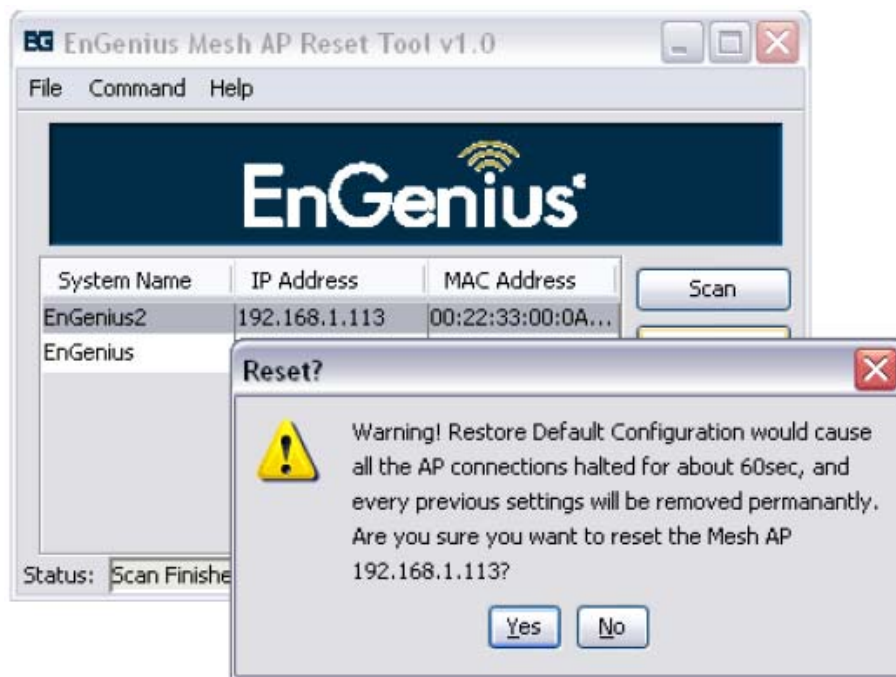
Before the user can restore the default value to an AP, the unit must be discovered first through the *EnGenius Mesh AP Reset Tool*. In order to list down all the available Mesh AP nearby, hit on the **Scan** button beside the table, or select *Command > Start Scan* option from the menu bar. The system would automatically search for every active AP, and listed in the table with their *System Name*, *IP Address* and *MAC Address*.

6. How to reset the Mesh APs

After the desired AP is listed on the table, user may use the following way to invoke the reset command:

1. Double-click on the desired table row, or
2. Select the desired table row and hit the **Reset AP** button.

Once user has executed the command, a warning dialog box would popup to prompt user to confirm the action. Since restore the factory settings back to the AP would cause every configuration done previously lost permanently, hence user is advised to check carefully before performing the Reset action. Press the **Yes** button on the dialog box, the system will be reset and reboot straight away.



7. Status

The status bar at the bottom of the window illustrates the status of the operation. Notice that there are two round icons at the east of the status bar. When the green icon is turn on, it indicates that the current operation is done, and the next operation can be execute; whereas when the red icon is on, it indicates that the current operation is still on going, other operation would not be performed.



8. Change Broadcast IP Address

The *Mesh AP Reset Tool* implements the broadcast method to search for the active APs around the subnet. Therefore in some cases where user is located at a different subnet from the APs, they can use this option to change the broadcast IP Address.



Select *Command > Edit Broadcast IP* option from the menu bar, a dialog box would appear to prompt user for the new IP. For instance, user can change the IP to 192.168.0.255 to scan for the APs which are located at that subnet. Click the **Change** button to load the new IP or **Cancel** to close the dialog box.

